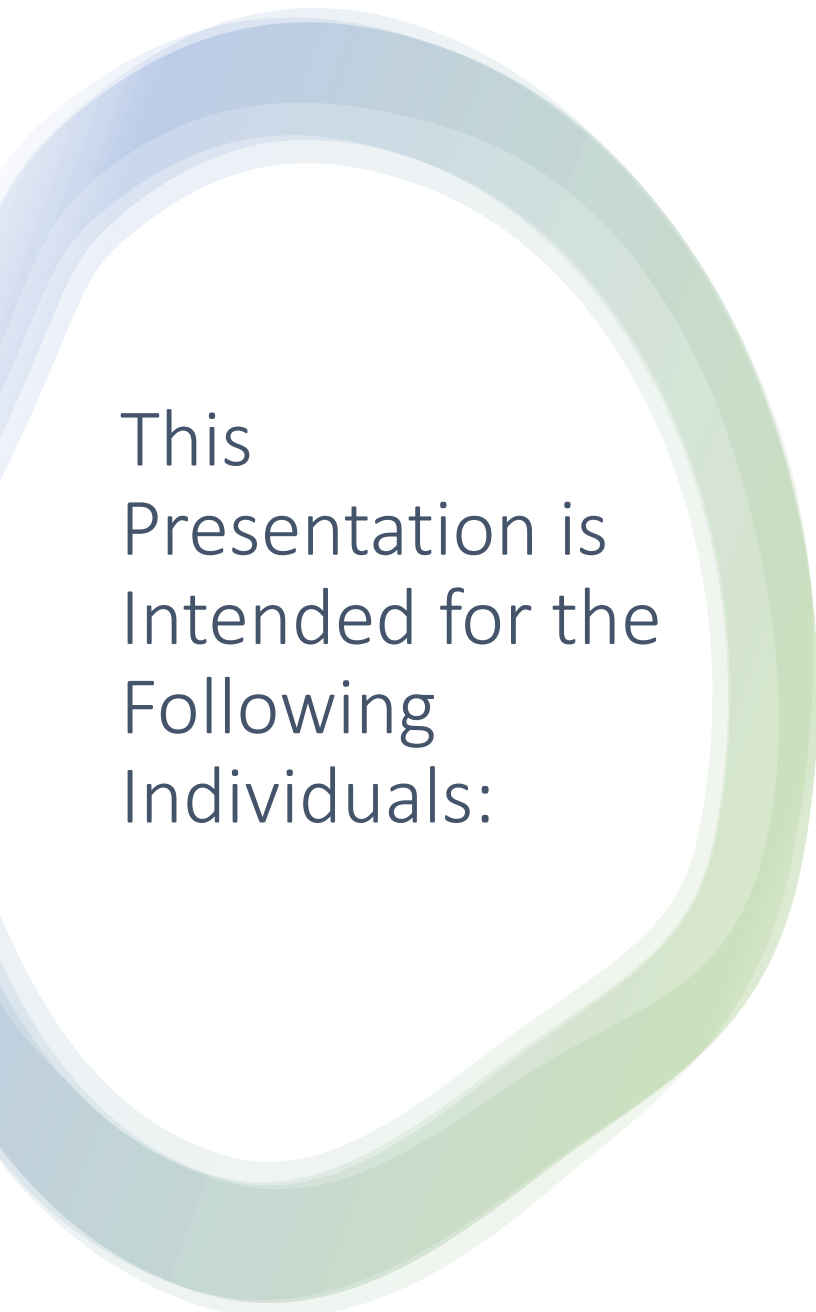


East High School
10th Grade Pre-
Enrollment &
General
Information (for
current 9th
Grade Students)

- Current Freshman Students will learn about Sophomore classes offered and will choose core classes as well as elective classes for their Sophomore year at East High School.
- Semester grades can help a student decide whether Honors classes or Regular classes are best placement. Based on grades, (English, Math, Science, History), you may want to consider enrolling in Honors classes in your Sophomore year of high school.



This
Presentation is
Intended for the
Following
Individuals:

- EHS Counselors/Staff enrolling Freshman students for their Next School Year (NSY) Sophomore classes. Enrollment is occurring through English classes from January 18th-31st
- Any EHS student absent from English class enrollment scheduled January 18-31, 2022. Check with your English teacher for your date of enrollment.
- Parents/Guardians of all currently enrolled EHS students who wish to support their student in completing the enrollment process.

Choosing Your English and History Classes

Current Freshmen who earned A's and B's in 1st Semester Regular English 1 and Regular World History Classes, and who will complete the year with A's and B's for 2nd semester, may wish to choose Honors English 2 and Honors U. S. History 1 classes for your Sophomore year. Otherwise, choose English 2 and U.S. History 1

Current Freshmen enrolled in Honors English 1 and Honors World History classes who earned A's or B's 1st Semester, and will do so 2nd Semester, are encouraged to enroll in Honors English 2 and Honors U. S. History 1 classes.

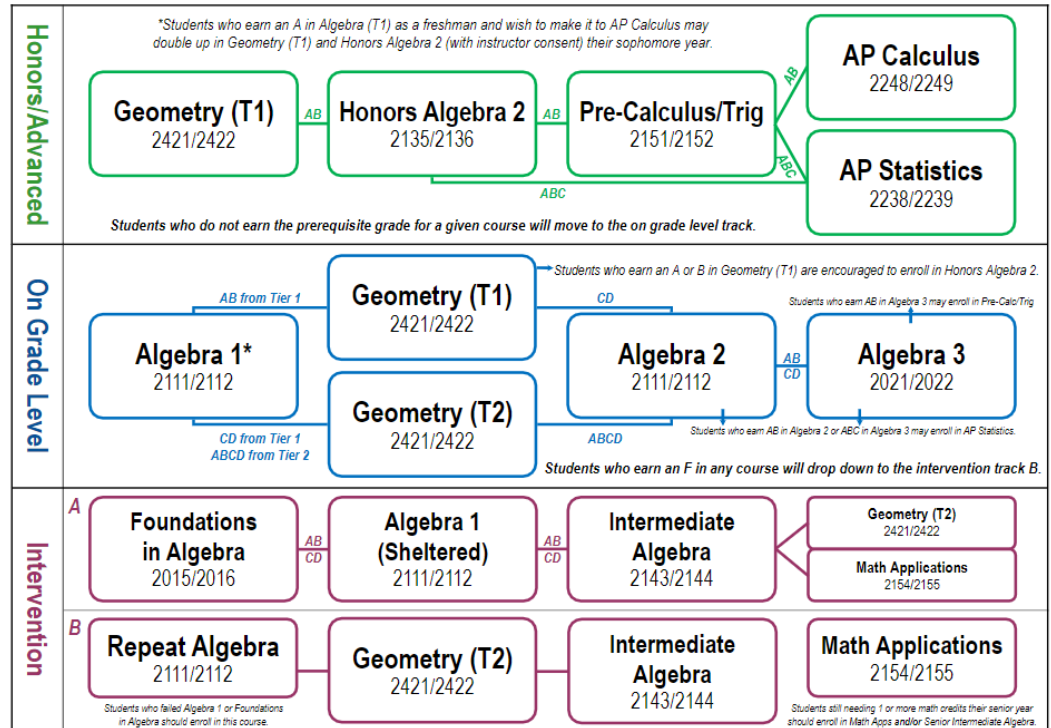
Remember, strong grades and strong study habits could indicate that you are ready for Honors classes.

Helpful Information: Math Enrollment For Sophomore Year

- Math placement for Sophomore students depends on grades from Freshman year.
- You may use the Math Courses chart to help you make a choice for your next year's math selection: All Math selections will be reviewed by your counselor, using your transcript grades, Math Course Chart, and Math department recommendations.

East High Math Courses

East High Math Courses



Science Selection

- Due to multiple placement options for Science, with consideration to student grades and career goals, Science placement is best determined by student academic performance in both Science and Math, teacher observation, and discussion with student.
- Students should use the information in parentheses on their pre-enrollment form as a general guide; however, all Science selections will be reviewed using student transcript and Science Department recommendations.

Concurrent Credit (CC) Classes:

For a complete list of East High's Concurrent Credit Classes, access the link in this presentation OR visit the [East High Homepage](#), click on [Students](#), click on [Student Service Center](#), and click on [Concurrent Credit Classes](#).

- There are several classes on the pre-enrollment form which can be taken for concurrent credit (CC)—this means you can earn high school credit for the class AND college credit at the same time. We strongly encourage students to take advantage of these classes by enrolling for CC credit—some CC classes are even free!
- All Concurrent Credit classes are noted on your form with a **CC** next to the class title. See example below.

Business - Electives			
	6720	CC	Business Essentials
	5735	CC	Computer Essentials
	6661		Gaming Concepts
	5741		Computer Graphics 1 - Promotions
	6743		Web Page Design (Pre-Req: 5735)

Getting Started with Your Online Pre- Enrollment

- Use the links provided in this presentation, or go to the **East High Homepage**, click on **Pre-enrollment**, then click on the grade that you will be going into next school year. Current Freshmen would click on the **10th Grade Pre-Enrollment Guide**.
- Be sure to **read and follow all instructions** on the **online form** when you access it.
- Think of your Xello suggested career results and use this knowledge to help strengthen your elective choices. We encourage you to discuss your pre-enrollment choices with your family before submitting your selections.
- Once you click 'Submit' you cannot go back and re-do your choices. Also, once submitted, your online form is sent to your high school counselor.

Keep in Mind...



Select the core classes and elective classes that are the best placement for you, based on a combination of your grades, test scores and ability. Use **Course History in Student Vue** to assist you in identifying classes you've already taken.



Read the instructions on your actual **online pre-enrollment form** before you begin.



Pay attention to the messages in parentheses on your form.



If a class requires a Pre-Req (another class that you have take first before you can take the one that you are choosing) the course number for the needed Pre-Req is listed—choose it instead if you have not already taken it.



Remember to select **at least 8-10 electives**. If you already took and passed an elective class, you cannot select the exact same class again except in the case of Weights, Lifetime Sports or Teacher Assistant

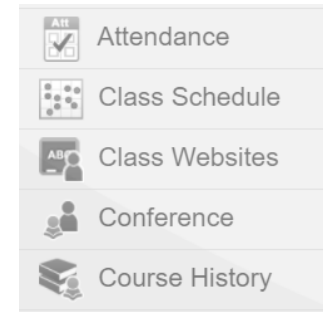


You can rank your electives in the 'Comments' section— just type in which elective you would like to have 1st, 2nd, 3rd, and so forth, and we'll do our best to enroll you in your most-hoped-for electives.

How To View Your USD 259 Course History in Student Vue :

- Go To **Student Vue**. Click on **Course History**. Be sure to turn the **Detail button** to **ON**. View all courses/electives you've already taken each grade to help you choose your upcoming classes.

StudentVUE



Student Course History

Detail: on

School Name	Grade	Year	Term	CHS Type
All	10	All	All	All



10th Grade Pre-Enrollment

Links: Here's a reminder on how to access the links needed for your pre-enrollment:

Go to the **East High School Homepage:**

Scroll down and click on the **Pre-**

Enrollment link, on left. Select your appropriate **Grade Pre-Enrollment Guide** based on your grade. **You will select the 10th Grade Pre-Enrollment Guide.**

Your choice: If working on Pre-Enrollment from home, you may print (at home) the Printable Pre-Enrollment Form and use it to select classes as you view the Video Program of Studies or as you read about classes using the Program of Studies; the printable form is also a fillable form, so you could use it electronically to keep track of your selections before actually enrolling online. Create tabs for each of the links you access (POS, video POS, etc.) as doing so makes it easier to research classes and fill in your form. Once you have selected your core and elective classes (choose between 8-10 elective choices) you are ready to go to the Online Pre-Enrollment form and input your selections.

Remember: Research classes using the links provided. If you access the Program of Studies (POS), you can use the Ctrl + F keys to quickly search for a class. Check out the Video POS to help you decide on elective classes.

Wichita High School East

Pre-Enrollment Guide for Current 9th Graders (Incoming 10th Graders)

10th Grade

Research Your Classes First!

Program of Studies

Descriptions of all courses

<https://bit.ly/ehsenroll>



Video Program of Studies

Course commercials by department

<https://bit.ly/ehscommercials>



Printable Pre-Enrollment Form

(Optional): print a copy of the paper worksheet for selecting classes before entering actual choices online

<https://bit.ly/ehsenroll10>



Fine Arts and CTE Courses

Listing of all Fine Arts and College and Career courses offered

<https://bit.ly/ehsartscte>



Concurrent Credit

Listing of all courses offered for concurrent university credit

<https://bit.ly/ehsconcurrent>



Research
Your
Classes
First...Then
go to the
Online Pre-
Enrollment
Form to
actually
select your
classes

Then Submit Your Choices Online to Your Counselor!

Online Pre-Enrollment Form

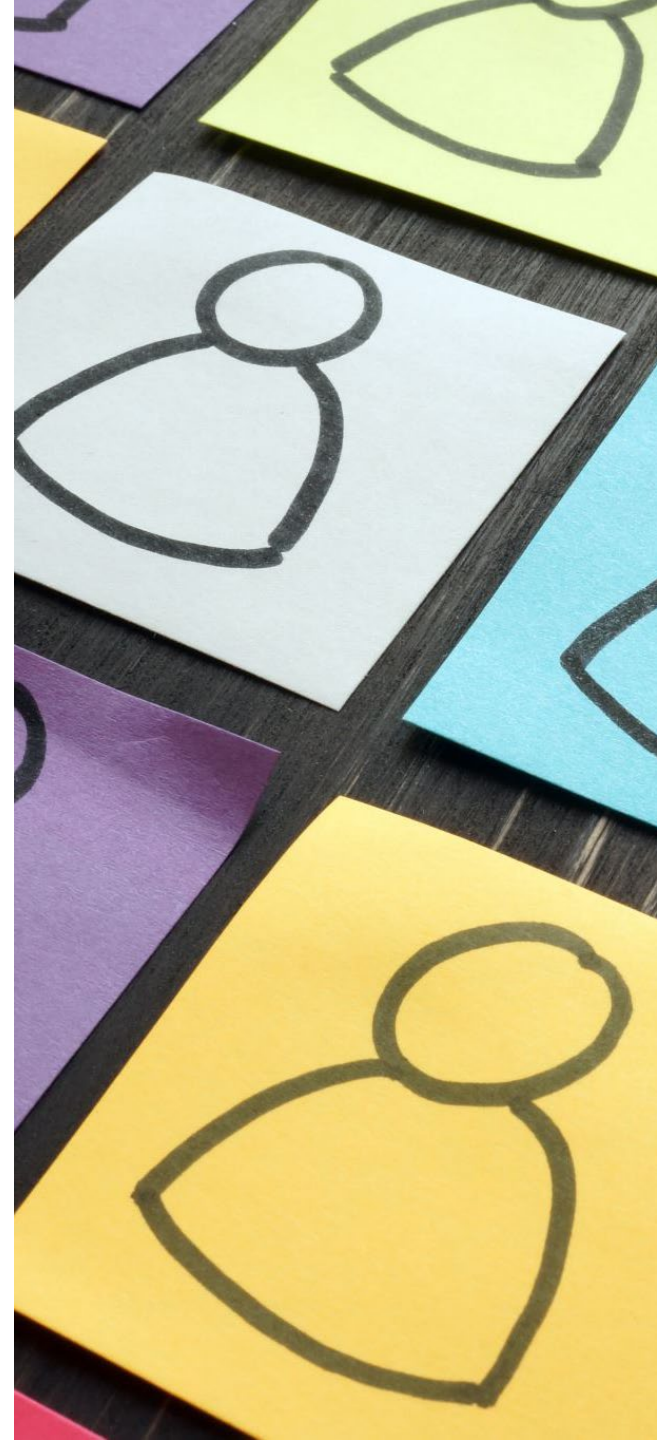
Microsoft form for submitting actual pre-enrollment course requests to your counselor

<https://bit.ly/ehsform10>



Homework

- Begin your enrollment by going to the **EHS Homepage**, scroll down and click on **Pre-Enrollment**. Select **10th Grade Pre-Enrollment Guide** and begin.
- Discuss and complete your Online Pre-Enrollment selections with your parent(s)/family. Reminder: You may find it helpful to open several tabs: for the POS, Video POS, Fine Arts & CTE Courses, the fillable and (optional) Printable Pre-enrollment form, and the Online Pre-Enrollment Form—this will make it easier for you to research and select classes.
- After discussing with your family and making your selections, **submit your form no later than January 30th**.
- Once you submit, you cannot return to the form to edit.
- Thank you. Enjoy selecting your classes for high school.



Slides 16– 21 display Separate QR Codes and Web Addresses To make it Easier to Scan Individually or for projection purposes in classroom presentations.

Printable Pre-Enrollment Form

(Optional): print a copy of the paper worksheet for selecting classes before entering actual choices online

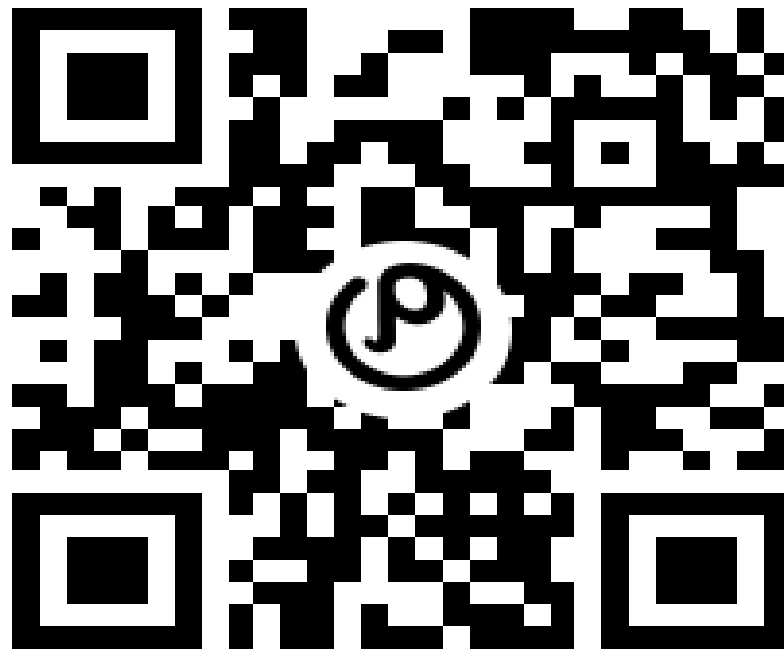
<https://bit.ly/ehsenroll10>



Program of Studies

Descriptions of all courses at East High

<https://bit.ly/ehsenroll>



Video Program of Studies

Course commercials by department

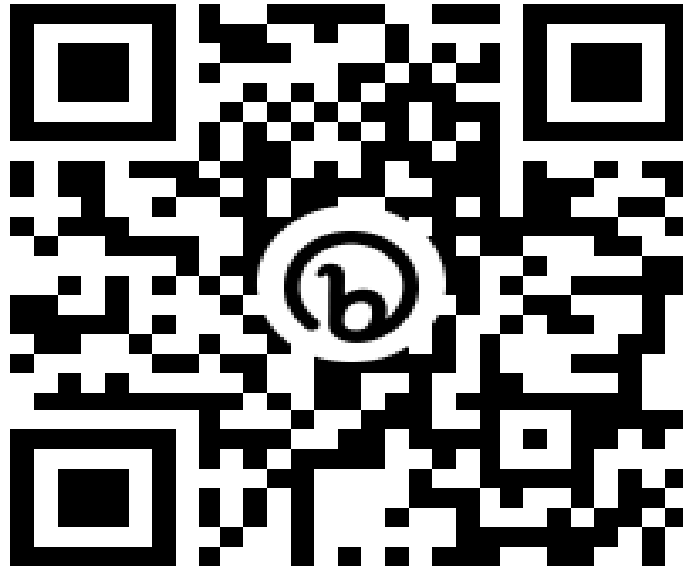
<https://bit.ly/ehscommercials>



Fine Arts and CTE Courses

Listing of all Fine Arts and College and Career courses offered at East High

<https://bit.ly/ehsartscte>



Concurrent Credit

Listing of all courses offered for concurrent university credit

<https://bit.ly/ehsconcurrent>



Online Pre-Enrollment Form

Microsoft form for submitting actual pre-enrollment course requests to your counselor

<https://bit.ly/ehsform10>

