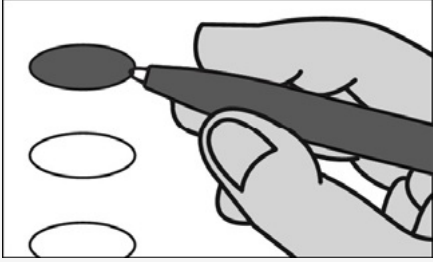


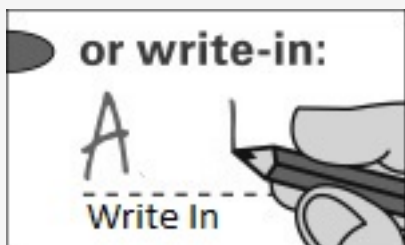
**Instructions**

**Making Selections**



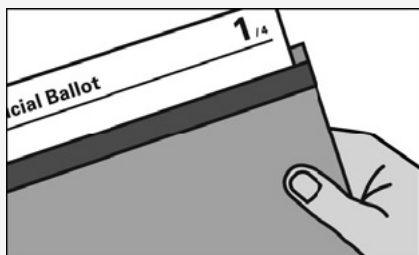
Use a blue or black ink pen to fill in the oval to the left of the name of your choice. You must darken the oval completely. Do not make any marks outside of the oval. You do not have to vote in every race.

To vote for a person whose name is not printed on the ballot, write the person's name in the blank space and darken the oval to the left.



Do not cross out or erase, or your vote may not count. If you make a mistake or a stray mark, ask for a new ballot.

**Turning in the ballot  
In Person Voters**



Insert the completed ballot into the ballot sleeve. Hand in the ballot to be counted.

**Mail Ballot Voters**

Seal your ballot in the ballot envelope provided and sign the envelope as directed; the envelope must be completed for your ballot to count. Return the sealed ballot either:

-in person to the Sedgwick County Election Office at 510 N Main, #101, Wichita, KS 67203 by 7 pm on Election Day -or-

-to an Early Vote Center or Election Day polling place, during voting hours, before 7 pm on Election Day -or-

-at a secure Sedgwick County ballot drop box before 7 pm on Election Day. To locate a secure ballot drop box, visit [www.sedgwickcounty.org/vote](http://www.sedgwickcounty.org/vote) or contact 316-660-7100 -or-

-by mail to the Sedgwick County Election Office at 510 N Main, #101, Wichita, KS 67203.

Mailed ballots must be postmarked by 7 pm on Election Day and require sufficient First Class Postage of 55¢.

Learn how to check the status of your returned ballot at [www.sedgwickcounty.org/vote](http://www.sedgwickcounty.org/vote) or contact 316-660-7100.

Precinct: 207

**National Offices**

**Electors for President and Vice President** Vote for One Set of Electors

- Trump and Pence** Republican
- Biden and Harris** Democratic
- Jorgensen and Cohen** Libertarian

\_\_\_\_\_  
**Write-In**

**For United States Senator** Vote for One (1) or Fewer

- Roger Marshall** Great Bend Republican
- Barbara Bollier** Mission Hills Democratic
- Jason Buckley** Overland Park Libertarian

\_\_\_\_\_  
**Write-In**

**For United States Representative, 4th District** Vote for One (1) or Fewer

- Laura Lombard** Wichita Democratic
- Ron Estes** Wichita Republican

\_\_\_\_\_  
**Write-In**

**State Offices**

**For State Senator 30th District** Vote for One (1) or Fewer

- Melissa Gregory** Wichita Democratic
- Renee Erickson** Wichita Republican

\_\_\_\_\_  
**Write-In**

**For State Representative 88th District** Vote for One (1) or Fewer

- Elizabeth Bishop** Wichita Democratic

\_\_\_\_\_  
**Write-In**

**For District Judge, 18th District, Div 01** Vote for One (1) or Fewer

- Phillip B. Journey** Haysville Republican
- Joni Cole** Wichita Democratic

\_\_\_\_\_  
**Write-In**

**For District Judge, 18th District, Div 02** Vote for One (1) or Fewer

- Dave Dahl** Wichita Republican

\_\_\_\_\_  
**Write-In**

**State Offices**

**For District Judge, 18th District, Div 03** Vote for One (1) or Fewer

- Gregory D Keith** Wichita Republican

\_\_\_\_\_  
**Write-In**

**For District Judge, 18th District, Div 06** Vote for One (1) or Fewer

- Eric N. Williams** Wichita Republican

\_\_\_\_\_  
**Write-In**

**For District Judge, 18th District, Div 09** Vote for One (1) or Fewer

- Christopher Magana** Wichita Republican

\_\_\_\_\_  
**Write-In**

**For District Judge, 18th District, Div 10** Vote for One (1) or Fewer

- Bruce Brown** Wichita Republican

\_\_\_\_\_  
**Write-In**

**For District Judge, 18th District, Div 11** Vote for One (1) or Fewer

- Quentin Pittman** Wichita Republican
- Monique Centeno** Wichita Democratic

\_\_\_\_\_  
**Write-In**

**For District Judge, 18th District, Div 12** Vote for One (1) or Fewer

- Kevin Mark Smith** Goddard Republican

\_\_\_\_\_  
**Write-In**

**For District Judge, 18th District, Div 13** Vote for One (1) or Fewer

- Kevin O'Connor** Wichita Republican

\_\_\_\_\_  
**Write-In**

**For District Judge, 18th District, Div 14** Vote for One (1) or Fewer

- Patrick Walters** Wichita Republican

\_\_\_\_\_  
**Write-In**

**For District Judge, 18th District, Div 16** Vote for One (1) or Fewer

- Kellie E. Hogan** Wichita Republican

\_\_\_\_\_  
**Write-In**

**Please Vote Both Sides**

**State Offices**

**For District Judge, 18th District, Div 20**  
Vote for One (1) or Fewer

**Stephen J. Ternes**  
Wichita Republican

Write-In

**For District Judge, 18th District, Div 21**  
Vote for One (1) or Fewer

**Jeff Dewey**  
Wichita Republican

Write-In

**For District Judge, 18th District, Div 22**  
Vote for One (1) or Fewer

**Deborah Hernandez Mitchell**  
Wichita Republican

Write-In

**For District Judge, 18th District, Div 23**  
Vote for One (1) or Fewer

**William S. Woolley**  
Wichita Republican

Write-In

**For District Judge, 18th District, Div 24**  
Vote for One (1) or Fewer

**Tyler J. Roush**  
Wichita Republican

Write-In

**For District Judge, 18th District, Div 25**  
Vote for One (1) or Fewer

**James Thompson**  
Wichita Democratic

**Sean Hatfield**  
Wichita Republican

Write-In

**For District Judge, 18th District, Div 26**  
Vote for One (1) or Fewer

**Jeff Goering**  
Wichita Republican

Write-In

**For District Judge, 18th District, Div 27**  
Vote for One (1) or Fewer

**Jeff Syrios**  
Wichita Republican

Write-In

**For District Judge, 18th District, Div 28**  
Vote for One (1) or Fewer

**Eric A. Commer**  
Wichita Republican

Write-In

**State Offices**

**For District Attorney, 18th District**  
Vote for One (1) or Fewer

**Marc Bennett**  
Wichita Republican

Write-In

**For State Board of Education Member**  
Vote for One (1) or Fewer  
**8th District**

**Kathy Busch**  
Wichita Republican

**Betty Arnold**  
Wichita Democratic

Write-In

**Supreme Court for Justice**  
Vote Yes or No

Shall **Eric S. Rosen**, Topeka, Position No. 4, Kansas Supreme Court, be retained in office?

- Yes**
- No**

**Court of Appeals for Judge**  
Vote Yes or No

Shall **Sarah E. Warner**, Lenexa, Position No. 4, Kansas Court of Appeals, be retained in office?

- Yes**
- No**

Shall **David E. Bruns**, Olathe, Position No. 6, Kansas Court of Appeals, be retained in office?

- Yes**
- No**

Shall **G. Gordon Atcheson**, Overland Park, Position No. 8, Kansas Court of Appeals, be retained in office?

- Yes**
- No**

Shall **Karen M. Arnold-Burger**, Overland Park, Position No. 9, Kansas Court of Appeals, be retained in office?

- Yes**
- No**

Shall **Kathryn Gardner**, Topeka, Position No. 14, Kansas Court of Appeals, be retained in office?

- Yes**
- No**

**County Offices**

**For County Clerk**  
Vote for One (1) or Fewer

**Kelli Reid**  
Democratic

**Kelly Arnold**  
Republican

Write-In

**County Offices**

**For County Treasurer**  
Vote for One (1) or Fewer

**Charity Kennedy**  
Democratic

**Brandi Baily**  
Republican

Write-In

**For County Register of Deeds**  
Vote for One (1) or Fewer

**Tonya Buckingham**  
Republican

Write-In

**For County Sheriff**  
Vote for One (1) or Fewer

**Jeff Easter**  
Republican

Write-In

**Thank you for voting!**  
**Please turn in**  
**your finished ballot**