

Wireless Adapter Display Projector Setup

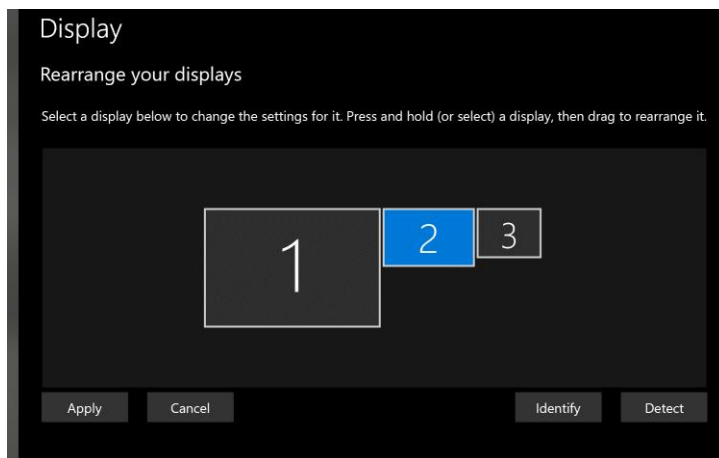
Quick Instructions

Press <Windows key> + <K> to open the Connect pane, then click on your projector name to connect.
Press <Windows key> + <P> to change from Duplicate to Extend.

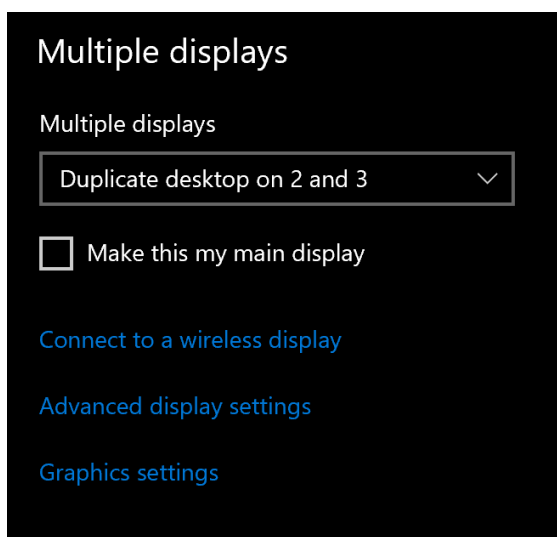
Detailed Instructions

Extended Mode and Duplicate 2+3: With Second Monitor

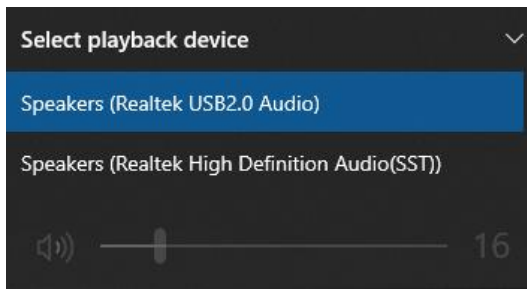
1. Turn on your projector.
2. Set projector to **HDMI1** for Source.
3. Swipe from the right or press <Windows key> + <K> to open the Connect pane.
4. Connect to the projector named for your room (e.g., Heights RmA150). Your projector will show "Connecting to [Your Name]" (e.g., "Connecting to Rebecca McIntyre").
5. Once connected, press the <Windows key> + <P> and select **Extend**.
6. Then right-click on your Desktop and choose **Display settings**.
7. Click on the display marked 2 as in the screenshot below:



8. Then scroll down and select **Duplicate desktop on 2 and 3**. This will duplicate your external monitor with your projector:

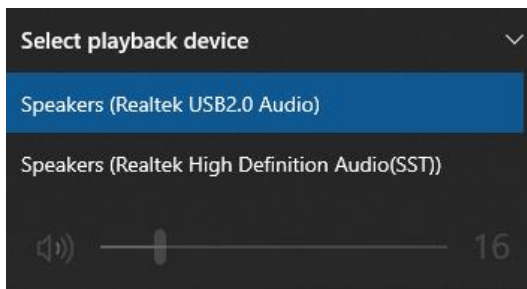


9. Finally, change the resolution of the combined 2|3 display to match the native resolution of your external display:
 - a. Widescreen Dell display: 1400 x 900
 - b. Older 4:3 Dell display: 1280 x 1024
 - c. Personal full HD display: 1920 x 1080
10. **Audio:** Change your audio source by clicking on the speaker icon in the system tray at the bottom-right of your screen. Make sure it's not set to the wireless display audio, otherwise your sound will output to the projector; instead, you should default to your Speakers (Realtek USB2.0 Audio) – your dock – or Speakers (Realtek High Definition Audio (SST)) if you are using just your Surface. If you have other audio like a Bluetooth speaker or headset, you'll want that to be your default.



Extended Mode – No Second Monitor

1. Turn on your projector.
2. Set projector to **HDMI1** for Source.
3. Press the **Aspect** key on your remote and select **Wide Zoom**.
4. Swipe from right or press <Windows key> + <K> to open the Connect pane.
5. Connect to the projector named for your room (e.g., E115). Your projector will show "Connecting to [Your Name]."
6. Once connected, press <Windows key> + <P> and select **Extend**. The projector should automatically adjust resolution to fit.
7. **Audio:** Change your audio source by clicking on the speaker icon in the system tray at the bottom-right of your screen. Make sure it's not set to the wireless display audio, otherwise your sound will output to the projector; instead, you should default to your Speakers (Realtek USB2.0 Audio) – your dock – or Speakers (Realtek High Definition Audio (SST)) if you are using just your Surface. If you have other audio like a Bluetooth speaker or headset, you'll want that to be your default.



Duplicate Mode – No Second Monitor

1. Turn on your projector.
2. Set projector to **HDMI1** for Source.
3. Press the **Aspect** key on your remote and select **4:3** or **Wide Zoom** if you have a SMART Board. Otherwise, I recommend leaving it on auto or trying the 16:9 or 16:10 setting.
4. Swipe from right or press <Windows key> + <K> to open the Connect pane.
5. Connect to the projector named for your room (e.g., E115). Your projector will show "Connecting to [Your Name]." If your screen is not duplicated, press <Windows key> + <P> and select **Duplicate**.
6. Once connected, change your resolution to 1980 x 1020 (it should remember that for future connections).

7. **Audio:** Change your audio source by clicking on the speaker icon in the system tray at the bottom-right of your screen. Make sure it's not set to the wireless display audio, otherwise your sound will output to the projector; instead, you should default to your Speakers (Realtek USB2.0 Audio) – your dock – or Speakers (Realtek High Definition Audio (SST)) if you are using just your Surface. If you have other audio like a Bluetooth speaker or headset, you'll want that to be your default.

