

# ***EVERY STUDENT FUTURE READY***

## **WPS FY25 Budget Update Phase 2 - School Closing Recommendation**

**WPSPROUD**



**WICHITA**  
PUBLIC SCHOOLS®

## **I. List of Decision-Making Methodology and Criteria**

### **A. Framework**

1. Review individual school conditions & utilization
2. Review surrounding area school conditions and utilization
3. Consider districtwide school conditions and utilization

### **B. Guidelines per BOE**

1. No layoffs due to closing schools
2. Fill vacancies at other locations to the greatest extent possible
3. Limit impact to 4-7 schools to achieve \$16 million in savings (first year estimate)
4. Make choices that are the least disruptive to the system, including minimizing boundary changes and feeder pattern changes
5. Move students where there is both physical capacity in the building and existing capacity in classrooms to minimize adding new staff to the building

### **C. Major Middle School Evaluation Criteria (meeting at least two or more of the criteria)**

1. Schools under 600 students
2. FCIs at .5 or more with 50% or more of classrooms under 700 sq ft
3. Small boundary with capacity in bordering boundaries
4. Magnet theme redundancies
5. Minimal staff additions based on proposed closure action
6. Review all other data for context

### **D. Major Elementary School Evaluation Criteria (meeting at least two or more of the criteria)**

1. Schools under 350 students
2. FCIs at .7 FCI or more
3. Enrollment declines greater than 20% since 2016-17
4. Magnet theme redundancies
5. Pure magnet option(s) to achieve savings without major boundary shifts
6. Minimal staff additions based on proposed closure action
7. Review all other data for context

**II. Data reviewed as part of school closure decisions:**

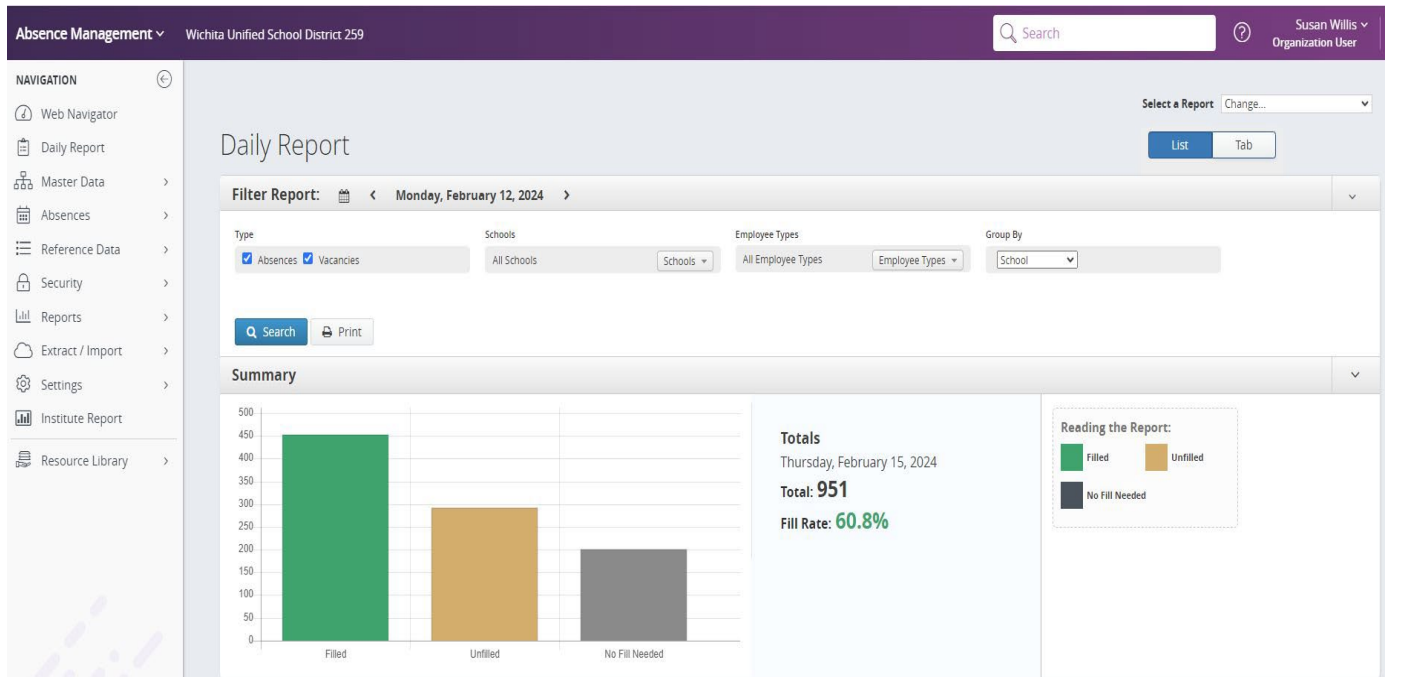
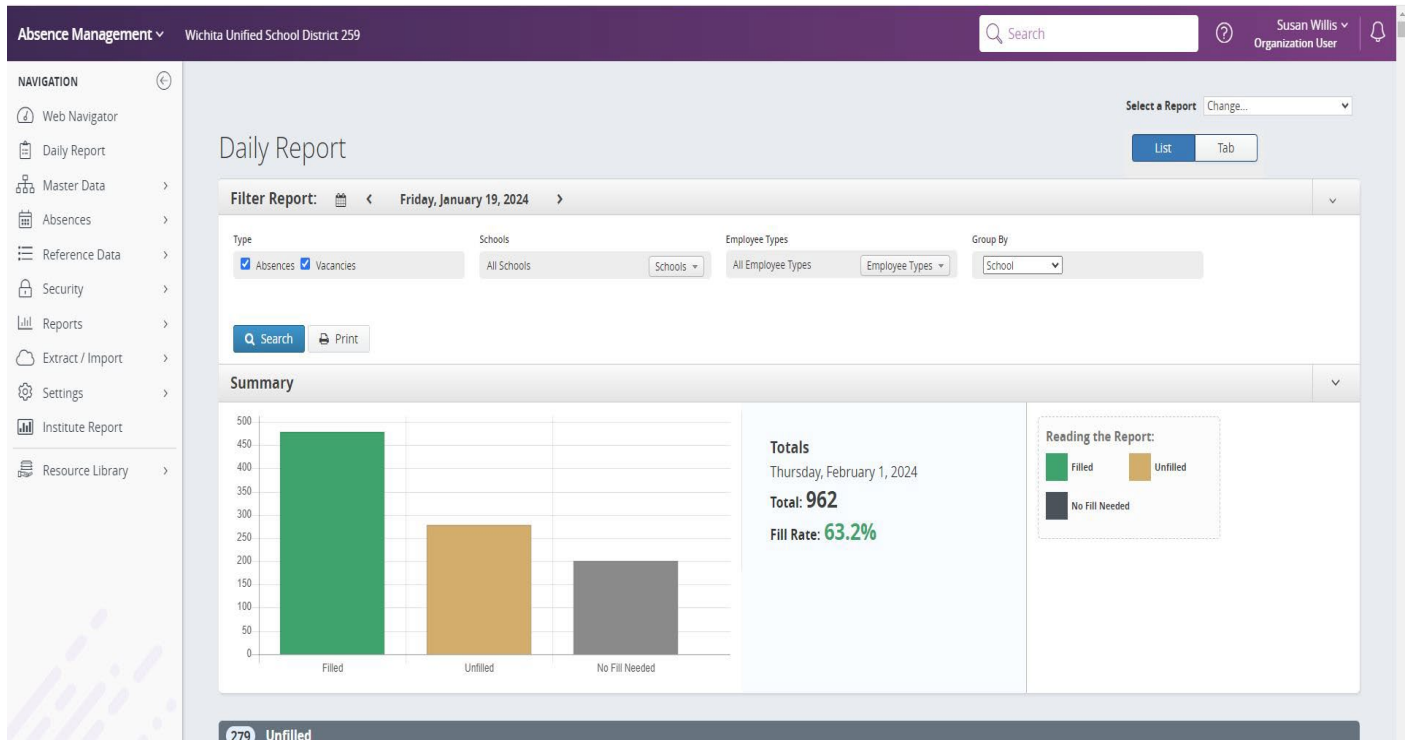
- A. <https://www.usd259.org/transform24> - video and PDF of presentation
- B. FCI scores: <https://www.usd259.org/Page/23582>
- C. Utilization rates: <https://www.usd259.org/Page/23582>
- D. ESSA data and Accountability Reports 2022-23: [www.ksde.org](http://www.ksde.org) Accountability Reports
- E. Needs assessments for the 2024-25 budget: <https://www.usd259.org/Page/22006>
- F. Free or Reduced Prices Lunches: <https://datacentral.ksde.org/> K-12 Reports
- G. Audited FTE FY16 – FY24: <https://www.ksde.org/Agency/Fiscal-and-Administrative-Services/School-Finance/Legal-Max-General-Fund-School-Finance-Studies>  
(KSDE final (audited, FY24) Legal Max spreadsheets – available back to FY07)
- H. Vacancies: <https://www.usd259.org/domain/139>
- I. Artificial Intelligence summaries of Feedback Data, Budget Listening Circles Fall 2023: <https://www.usd259.org/Page/23573>
- J. ESSER Priorities: <https://www.usd259.org/Page/21254>
- K. Superintendent Search feedback – can be found online: <https://www.usd259.org/superintendentsearch>
- L. Strategic Plan feedback: <https://www.usd259.org/futureready>
- M. Official headcount report 9/20/24: [https://datacentral.ksde.org/report\\_gen.aspx](https://datacentral.ksde.org/report_gen.aspx)
- N. Sedgwick County GIS Maps: <https://www.sedgwickcounty.org/gis/printable-maps/special-purpose-maps/>
- O. Magnet Themes: <https://www.usd259.org/Page/16098>
- P. Years, ages and feeder patterns of buildings: Exhibit I
- Q. Substitute challenges-Frontline Absence Report Samples Exhibit II
- R. General school data, proposed closing schools: Exhibit III
- S. FTE by building Exhibit IV
- T. Deferred Maintenance listing Exhibit V
- U. Summary Data FCI– Closing to Welcoming; Est Class Size impacts Exhibit VI
- V. Current Mobility Rates for District Exhibit VII

## Exhibit I – Building Age and Feeder Patterns

Use this sheet for Feeder Schools:

			Current Year 2023		
	Year Built	Age		Year Built	Age
<b>East</b>			<b>South</b>		
Jardine	1922	101	Truesdell	1959	64
Mead	1957	66	Enders	1956	67
Robinson	1951	72	Cessna	2012	11
College Hill	1932	91	Enterprise	1960	63
Colvin	1977	46	Kelly	2003	20
Griffith	1978	45	White	1957	66
Hyde	1958	65	Woodman	1957	66
Linwood	1930	93	Anderson	1962	61
Washington	2004	19	Anderson	1953	70
<b>East Average Building Age</b>	2003	20	<b>South Average Building Age</b>		<b>54</b>
<b>Heights</b>			<b>Southeast</b>		
Stucky	1961	62	Christa McAuliffe	2016	7
Buckner	2003	20	Coleman	2012	11
Chisholm Trail	1955	68	Curtis	1966	57
Earhart	1954	69	Adams	1951	72
Gammon	1954	69	Allen	1947	76
Isely	2009	14	Beech	2003	20
Jackson	1984	39	Caldwell	1984	39
<b>Heights Average Building Age</b>	2012	11	Clark	1950	73
	2004	19	Jefferson	1952	71
			Minneha	1942	81
<b>North</b>			Price Harris	1948	75
Hadley	1929	94	Seltzer	1956	67
Marshall	1958	65	<b>Southeast Average Bldg Avg</b>	2000	<b>23</b>
Pleasant Valley Mid	1939	84			<b>52</b>
Black	1955	68	<b>West</b>		
Cloud	1954	69	Hamilton	1952	71
Irving	1954	69	Dodge	1918	105
McLean	1941	82	Franklin	2011	12
OK	1955	68	Gardiner	1941	82
Ortiz	1929	94	Harry Street	1924	99
Park	2011	12	Lawrence	1922	101
Pleasant Valley Ele	1922	101	Payne	1952	71
Riverside	1948	75	Stanley	1953	70
Woodland	1910	113	<b>West Average Bldg Age</b>	1930	<b>93</b>
<b>North Average Building Age</b>	1919	104			<b>78</b>
			<b>Special Schools &amp; Special Programs</b>		
<b>Pure Magnet</b>			Wichita Alternative (Chester Lewis)	1951	72
Northeast	2012	11	Gateway Alt Program		
Allison	1919	104	<b>Altern Average Bldg Age</b>		<b>72</b>
Bostic	1956	67			
Brooks	1956	67	<b>Sped Schools</b>		
Cleaveland	1962	61	Dunlap Transition at Chisholm		
Gordon Parks Mid	2008	15	Life	1948	75
Horace Mann Mid	2003	20	Bryant	1956	67
Mayberry	1954	69	Levy	1981	42
<b>Pure Magnet Average Building Age</b>		<b>52</b>	Sowers	1952	71
			Greiffenstein/Wells	1956	67
<b>Assigned Attendance Area (AAA)</b>			<b>Sped Building Average Age</b>		<b>64</b>
Gordon Parks Ele	2008	15			
L'Ouverture	1951	72	<b>Non-Attendance</b>		
Mueller	2011	12	AMAC	1957	66
Spaght	2012	11	ISC	1953	70
<b>AAA Average Building Age</b>		<b>28</b>	IST	1982	41
			SSC	1975	48
<b>Northwest</b>			Dunbar	1971	52
Wilbur	1978	45	<b>Non-Attendance Avg Bldg Age</b>		<b>55</b>
	1966	57			
Benton	1957	66	Little	1954	69
Kensler	1958	65			
McCullom	1959	64			
Peterson	1952	71			
<b>Northwest Average Building Age</b>		<b>61</b>			

## Exhibit II - Frontline Absence Management data – two examples showing staffing shortfalls



## Exhibit III – Closing Schools general information

### PROPOSED SCHOOL CLOSING SNAPSHOT

#### **Clark Elementary**

- Opened Feb 1953
- Named after Jessie Clark, our district's first music supervisor
- 2000 bond issue: \$1.3 million enhancement
- 2008 bond issue: \$871,000 enhancement:
  - Addition that included 2 classrooms, one music room, conference room, teacher workroom, two restrooms
  - The classroom/two restroom enhancement was built as a FEMA shelter
  - Fire access driveway, new HVAC system in 1976 addition
  - Work completed in Dec. 2010
- Current principal: Tara Hall
- Enrollment: 240
  - 38% African American
  - 21% Hispanic
  - 21% White
  - 13% Multiracial
  - 7% Other races
- Lincoln and Woodlawn: closest major intersection

#### **Cleaveland Elementary**

- School opened in 1956 as all-portables
- Building opened in 1962
- Named after Cynthia Cleaveland, a Wichita teacher in the city's early days, and she helped organize the Wichita City Teachers' Association
- *Enrollment declined in the area from late 60s to late 80s, and Cleaveland was closed at the end of the 1995-96 school year.*
- *Opened as a traditional magnet in 1996-97*
- 2000 bond issue: minimal improvements
- 2008 bond issue: \$595,000 enhancement
  - Addition with 1 classroom, art room, restrooms, also designed as a FEMA shelter.
  - Work completed October 2010
- Current principal: Tracy Minette
- Enrollment: 296
  - 13% African American
  - 40% Hispanic
  - 13% Multiracial
  - 31% White
  - 3% Other races
- 31<sup>st</sup> Street South and West Street: closest major intersection

### **Hadley Middle School**

- School opened in 1958
- Named after W.S. Hadley, a Wichita banker on the west side of town, city commissioner, and individual very active in the work of Friends University.
- 2000 bond improvements: \$2.7 million
- 2008 bond improvements: \$3.2 million
  - New cafeteria, commons, main gym (also serves as the FEMA shelter)
  - Upgrades to auditorium and installation of 8-lane all-weather tracks NOT included in bond contract but done at the same time as part of a district-facilitated contract
  - Work completed March 2012
- Current principal: Ron Stubbs
- Enrollment: Official 507
  - 17% African American
  - 41% Hispanic
  - 7% Multiracial
  - 34% White
  - 1% Other Races
- 9<sup>th</sup> and West Street: nearest major intersection
  - Shares land with Bryant Elementary and Orchard Park

### **Jardine Middle School**

- Opened in the 40s, built as a 6-year high school to educate children of airplane factory workers
- Became a WPS building in 1955, and became junior high only in 1957.
- Current building opened in Sept. 1958
- Named for Dr. William Jardine, president of Kanas State University and later Wichita State University
- *In 1996, Jardine closed and students were sent to Mead, Truesdell and Curtis.*
- *Jardine was Edison Junior Academy from 1996-97 to 2002-03.*
- *Jardine Magnet opened in 2003-04.*
- 2000 bond improvements: \$3.5 million
- 2008 bond improvements: \$1.5 million, plus \$800,000 to build the GraceMed clinic (privately funded)
  - 4 classrooms designed as a storm shelter
  - ADA front entry ramp, resurface parking lot/drive
  - Upgrades to auditorium done at the same time, but under a separate district contract
  - Work completed January 2015
- Current principal: Josh Wilbert
- Enrollment: Official 500
  - 190 are students from the neighborhood, others are magnet students
  - 17% African American
  - 7% Asian
  - 52% Hispanic
  - 4% Multiracial
  - 18% White
  - 2% Other races
- Pawnee and Oliver: nearest major intersection

### **Park Elementary**

- Oldest operating school in Wichita (circa 1885)
- Present building constructed in 1921
- Named after the original street name of the school's location (Park)
- Was a partner school to Horace Mann, housing grades K-2, in 1989
- Became independent from Horace Mann after 2000 bond issue improvements
- 2000 bond improvements: \$2.8 million, including FEMA safe room
- 2008 bond improvement: scrapped due to budget constraints, secured entryway only was funded by capital outlay
- Current principal: Kristi Franks
- Enrollment: 337 (439 currently)
  - 13% African American
  - 66% Hispanic
  - 7% Multiracial
  - 12% White
  - 2% Other races
- 11<sup>th</sup> and Main: nearest major intersection

### **Payne Elementary**

- Opened January 1954
- Named after David Payne, member of the KS legislature and well-known figure in the opening of the Oklahoma Territory
- 2000 bond improvements: \$2.5 million
- 2008 bond improvements: scrapped due to Pause & Study recommendation
- Current principal: Tina Young
- Enrollment: 231 (currently 262)
  - 18% African American
  - 36% Hispanic
  - 11% Multiracial
  - 33% White
  - 2% Other races
- Harry and Meridian: nearest major intersection



**Exhibit IV - FTE by Building**

<b>Building Name</b>	<b>Budgeted FTE</b>	<b>Building Name</b>	<b>Budgeted FTE</b>
Adams	57.13	Jardine	74.99
Allen	66.91	Jefferson	56.33
Allison	57.75	Kelly	52.3
Anderson	70.28	Kensler	66.67
Beech	66.71	Lawrence	52.01
Benton	46.59	Linwood	63.73
Black	41.33	L'Ouverture	37.71
Bostic	37.9	Marshall	67.09
Brooks	70.97	Mayberry	70.45
Buckner	50.5	McCollom	57.96
Caldwell	70.75	McLean	32.1
Cessna	54.87	Mead	76.93
Chisholm Trail	57.44	Minneha	67.54
Clark	37.65	Mueller	61.87
Cleaveland	43.07	OK	50.78
Cloud	78.12	Ortiz	56.02
Coleman	81.18	Park	44.06
College Hill	53.36	Payne	38.27
Colvin	99.51	Peterson	47.19
Curtis	122.44	Pleasant Valley Elementary	44.06
Dodge	61.35	Pleasant Valley Middle School	86.41
Earhart	43.74	Price-Harris	48.51
Enders	70.77	Riverside Leadership Magnet	32.53
Enterprise	71.18	Robinson	88.36
Franklin	52.23	Seltzer	69.13
Gammon	67.25	Spaght Multimedia Magnet	68.89
Gardiner	60.91	Stanley	68.96
Griffith	69.1	Stucky	84.37
Hadley	88.77	Truesdell	127.67
Hamilton	85.34	Washington	64.86
Harry Street	53.28	White	56.66
Hyde	32.1	Wilbur	96.71
Irving	44.53	Woodland	45.72
Isely	98.71	Woodman	87.74
Jackson	62.49		

**Exhibit V – Deferred Maintenance**

Type	Name	Deferred Maint
Elementary	Park	\$10,966,919.98
Elementary	Adams	\$12,159,330.71
Elementary	Riverside Leadership Magnet	\$ 7,396,328.83
Elementary	Pleasant Valley	\$ 8,019,800.71
Elementary	Minneha Core Knowledge Magnet	\$16,444,698.08
Elementary	Clark	\$ 8,263,702.71
Elementary	Franklin	\$ 7,531,569.85
Elementary	OK	\$ 8,146,789.49
Elementary	Irving	\$10,452,838.55
Elementary	Caldwell	\$11,784,312.08
Elementary	Gardiner	\$11,249,944.24
Elementary	Peterson	\$ 9,553,433.22
Elementary	Payne	\$ 5,116,513.49
Elementary	Black Traditional Magnet	\$ 8,353,754.28
Elementary	Hyde Int'l Studies/Commun Magnet	\$ 6,467,401.15
Elementary	Harry Street	\$ 6,731,956.64
Elementary	McCollow	\$ 7,880,625.79
Elementary	Stanley	\$ 9,633,762.53
Elementary	Anderson	\$ 9,721,687.85
Elementary	Buckner Performing Arts/Sci Magnet	\$ 6,401,726.97
Elementary	College Hill	\$ 7,095,065.85
Elementary	Lawrence	\$ 7,603,357.06
Elementary	L'Ouverture Career Explorations & Tech. Mag.	\$ 6,228,974.78

**Exhibit V – Deferred Maintenance**

Type	Name	Deferred Maint
Elementary	Chisholm Trail	\$10,978,186.21
Elementary	Kensler	\$10,658,953.64
Elementary	McLean Science and Tech Magnet	\$ 5,528,134.18
Elementary	Jefferson	\$ 6,391,188.81
Elementary	Price-Harris Communications Magnet	\$ 6,518,583.13
Elementary	White	\$ 8,357,955.27
Elementary	Griffith	\$ 7,851,269.25
Elementary	Woodman	\$10,464,051.14
Elementary	Kelly Liberal Arts Academy	\$ 6,799,511.06
Elementary	Jackson	\$ 6,779,729.03
Elementary	Bostic Traditional Magnet	\$ 4,988,546.97
Elementary	Woodland STEM Academy Leaders in BioScience	\$ 3,410,499.49
Elementary	Gammon	\$ 6,987,425.13
Elementary	Cessna	\$ 5,759,873.62
Elementary	Cleveland Traditional Magnet	\$ 4,442,844.80
Elementary	Colvin	\$ 9,285,634.81
Elementary	Cloud	\$12,411,504.73
Elementary	Enterprise	\$ 4,404,645.86
Elementary	Benton	\$ 4,983,959.65
Elementary	Linwood	\$ 5,746,188.74
Elementary	Washington Accelerated Learning	\$ 5,928,967.70
Elementary	Spaght Sci/Communications Magnet	\$ 4,609,202.13
Elementary	Mueller Aerospace/Engineering Mag.	\$ 4,339,418.46

**Exhibit V – Deferred Maintenance**

Type	Name	Deferred Maint
Elementary	Beech	\$ 4,710,173.13
Elementary	Seltzer	\$ 3,847,640.88
Elementary	Ortiz	\$ 3,291,578.95
Elementary	Allen	\$ 2,079,679.13
Elementary	Isely Traditional Magnet	\$ 4,353,900.29
Elementary	Earhart Environmental Magnet	\$ 1,933,217.17
Elementary	Dodge Literacy Magnet	\$ 2,056,832.33
Elementary	Enders STEM and Leadership Magnet	\$ 911,073.14
Middle Schools	Allison Traditional Magnet	\$21,975,787.91
Middle Schools	Brooks STEM	\$17,504,268.02
Middle Schools	Coleman Middle	\$12,382,898.46
Middle Schools	Curtis Middle	\$32,179,934.87
Middle Schools	Hadley Middle	\$16,935,988.61
Middle Schools	Hamilton Middle	\$24,977,929.72
Middle Schools	Jardine STEM	\$15,714,103.33
Middle Schools	Marshall Middle	\$19,479,441.46
Middle Schools	Mayberry Fine Arts	\$21,647,789.75
Middle Schools	Mead Middle	\$21,112,385.30
Middle Schools	Pleasant Valley Middle	\$16,439,257.85
Middle Schools	Robinson Middle	\$22,773,726.38
Middle Schools	Stucky Middle	\$ 8,154,676.79
Middle Schools	Truesdell Middle	\$21,705,095.60
Middle Schools	Wilbur Middle	\$17,711,756.15

**Exhibit VI - Summary Data FCI– Closing to Welcoming; Est Class Size impacts**

Closing School	2023-24 Enrollment	Utilization	Closing FCI	Welcoming School	Estimated Students	Welcoming Est Utilization	Welcoming FCI	Average Class Size
Clark	240	51%	0.76	Beech	76	89%	0.31	20.14
				Caldwell	64	79%	0.72	19.33
				Allen	77	89%	0.18	20.03
Cleveland - Magnet	296	85%	0.43	Kelly	84	92%	0.49	21.33
				Other	212	N/A	N/A	
Payne	231	59%	0.7	Stanley	76	96%	0.65	22.61
				Woodman	109	93%	0.53	24.38
				Lawrence	53	89%	0.62	19.28
Park	337	74%	0.95	Irving	126	90%	0.75	21.89
				Harry Street	26	93%	0.65	19.53
				Washington	38	76%	0.35	21.79
				Linwood	51	89%	0.4	22.19
Hadley	507	51%	0.62	Hamilton	55	73%	0.78	22.84
				Marshall	97	81%	0.78	22.20
				PVMS	179	83%	0.47	24.33
				Wilbur	127	94%	0.68	25.51
Jardine - Magnet	499	71%	0.55	Mead	258	91%	0.76	24.55
				Other	241	N/A		

**Exhibit VII – Mobility Rates (as of 2/5/24)**

District = 18.92%

Elementary = 15.74%

Middle = 20.18%

High = 22.46%