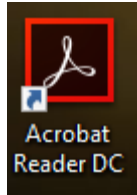


PDF's and Windows 10

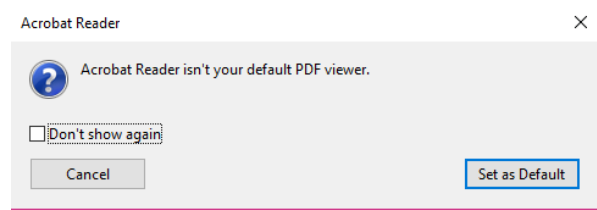
If your PDF's open in Microsoft Edge here is how to change that!

1. Open Adobe icon on your desk top.



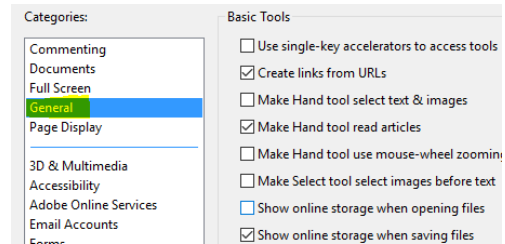
2. It may prompt you to set this as your default.

Click Set as Default

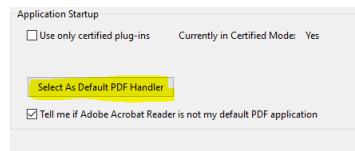


If you missed this step...that's ok. Now follow these steps.

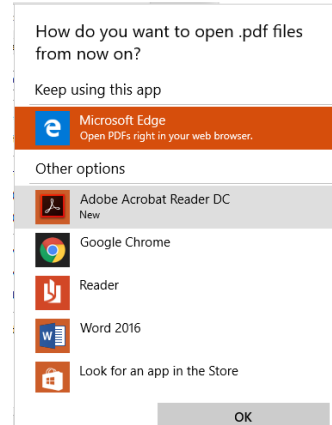
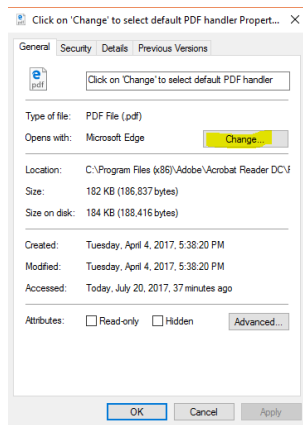
1. Click on File then go to Preferences (at the bottom)
2. Click on General then scroll to the bottom



3. Select As Default PDF Handler



4. In this dialog box, select Change and then select Adobe.....Voila!



Please call the Help Desk 3-4357 if you have need more assistance.